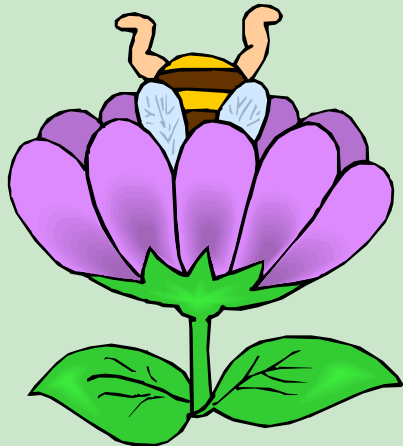


# **T**he Weekly Bee

*The Weekly Bee newsletter is a weekly information and educational publication created to share current information relevant to the credit counseling industry, organizations that provide credit counseling service and their clients.*



**The Weekly Bee** digs deep for the latest information to share with readers.



## **Arbor Investment in Financial Education**

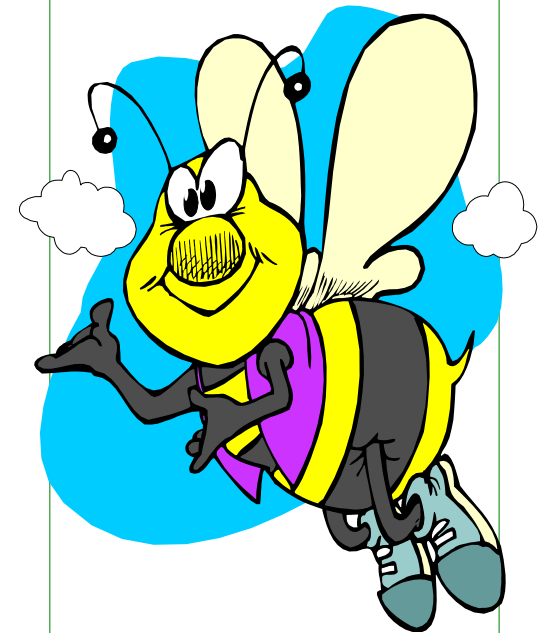
1850 South 72nd Street  
Omaha, NE  
68124

Phone: 402-501-8189  
Fax: 402-393-1579  
Email: [LCameron@arbored.com](mailto:LCameron@arbored.com)

Investing in Your  
Financial Education

## THE WEEKLY BEE

:::  
**'BEE A CREDIT  
EXPERT'**

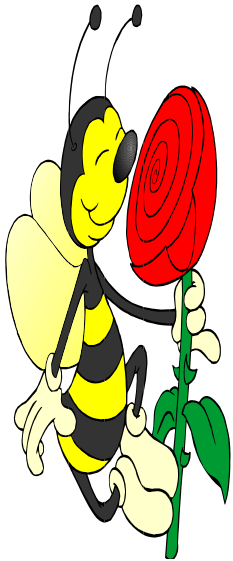


**Arbor Investment in Financial Education**

Tel: 402-501-8189

# THE WEEKLY BEE

Arbor Investment... In Financial Education publishes **The Weekly Bee** newsletter for the continuing education of both the consumer and the credit counseling professional.



Keep the roses of helpful information you'll find in **The Weekly Bee**.

With **The Weekly Bee**, we do the research. We'll get rid of the thorns and keep the roses of helpful

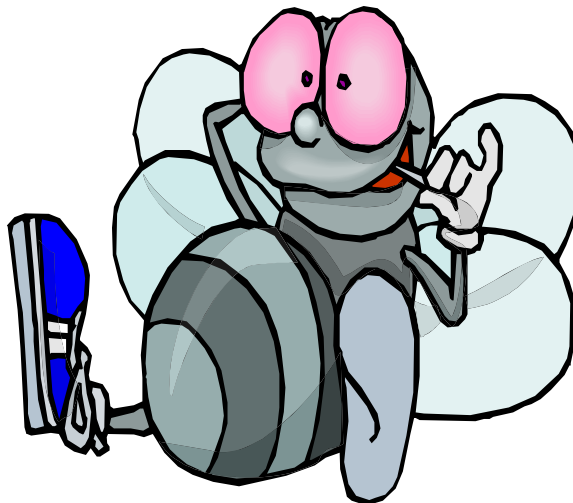
information.

Each newsletter focuses on one topic of discussion and reviews possible results or consequences of related uninformed choices.

## Topics

The topics of **The Weekly Bee** are timely and relevant to the credit counseling industry. Previous topics have included a variety of hints, helps, and insights for more informed debt management options and alternatives.

For example, 'To protect your credit, know your rights' explained consumer rights, how to get more information on consumer rights, stopping fraud and protecting the consumer against identity theft.



**The Weekly Bee** keeps you informed of timely and relevant topics related to the effective management of debt.

Other topics have included: the hassle of missed mortgage payments, reverse mortgages, the relationship between credit issues and insurance rates or renewal of policies and credit checks during the hiring process.

## Questions and Answers

Send **The Weekly Bee** your questions or special requests.

The workers in the Hive will research and investigate, so you don't have to.

Answers will be supplied in future issues of **The Weekly Bee**.

Arbor Investment in  
Financial Education

1850 South 72nd Street  
Omaha, NE  
68124

Phone: 402-501-8189  
Fax: 402-393-1579  
Email: LCameron@arbored.com